



STRUCTURES AND MATERIALS LAB

DELIVERING
SUPERIOR
TESTING SOLUTIONS

as an ISO 17025 accredited testing laboratory.

The SML is also an approved laboratory by the Florida Department of Transportation (FDOT) for product approval and project evaluation of non-metallic materials and systems.



Our Mission

Dedicated to conducting applied and fundamental testing & analysis of construction materials & structural systems. Focused on innovative and resilient solutions to promote sustainable and economic development of infrastructure. We are committed to continuous improvement of testing, services and processes to deliver quality service.

Delivering Value

- A trusted leader in the industry
- State-of-the-art facilities and equipment
- Team of expert engineers and technicians
- Cutting-edge research and innovation
- Industry and academic collaborations
- Competitive pricing

Our Services



Comprehensive Testing of concrete non-metallic materials and structures



Materials Testing and Analysis



Structural Testing and Analysis



Non Destructive Testing (NDT)



ASTM Testing



Research & Development



GET IN TOUCH

305-284-6150
305-284-0573

1251 Memorial Drive, MEB 108
Coral Gables, FL 33146-2509

umsml@miami.edu
www.umsml.com

Certificate of Accreditation





**STRUCTURES AND MATERIALS
INSPECTION BODY**

**BUILT
INFRASTRUCTURE
INSPECTION SERVICES**

ISO 17020 accredited inspection body

Our Mission

At the SML, our mission is to provide service that sets the gold standard for precision & impartiality. We are dedicated to ensuring safety, quality and regulatory compliance in the built infrastructure through dedicated inspection services. We are committed to excellence and continuous improvement, adapting to market changes to meet evolving needs.

Delivering Value

- Customized Solutions for Clients
- Licensed Professional Engineers
- Documented and Traceable Reports
- Global Recognition and Trust

Our Services



Comprehensive Concrete Inspection:

- In-Plant & In-Situ
- Precast/Prestressed
- Batch Plants



Structural Materials Integrity Assessment

- Existing Buildings
- Condition Assessment
- Sampling & Materials Testing (ISO 17025 Accredited Lab)



Reinforcement and Building Materials Expertise

- FRP Bars and Pultruded Composites
- Concrete Reinforcement and Strengthening Materials
- QC/QA Building Construction Inspections



Construction and Structural Compliance:

- Nonmetallic FRP Materials Systems
- Structural Steel, Wood and Hybrid Systems
- Building Facades and Concrete Placement



GET IN TOUCH

305-284-4119
305-284-0573

1251 Memorial Drive, MEB 108
Coral Gables, FL 33146-2509

umsml@miami.edu
www.umsml.com

Certificates of Accreditation



Dr. Antonio Nanni

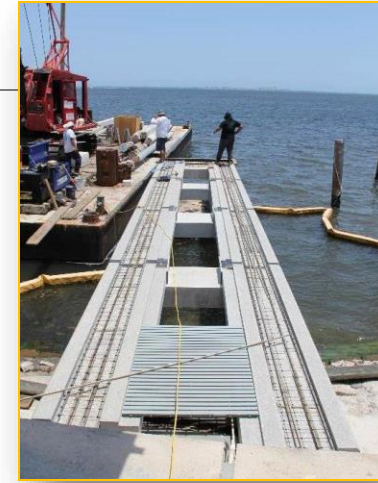
Research topics:

- Sustainable concrete systems
- Composite reinforcement for concrete structures
- Development of guides, specifications and codes
- Laboratory validation
- Field applications of reinforced and prestressed concrete:

- Coastal structures
- Bridge structures
- Buildings
- Foundations



Precast-concrete dock modular-system & cast-in-place seawall



GFRP double mat for bridge deck reinforcement & pile cap



BFRP-reinforced topping slab in high-rise building & GFRP-reinforced masonry wall



Partially prestressed 18"x18" pile using pretensioned #4 GFRP bars & auger-cast piles

